

PART OF WEST 1/2 OF SEC. 33, T.7N.R.1E., S.L.B&M.

BIG SKY ESTATES NO. I

LOTS 1 TO 3, 23 TO 30, 36 TO 47

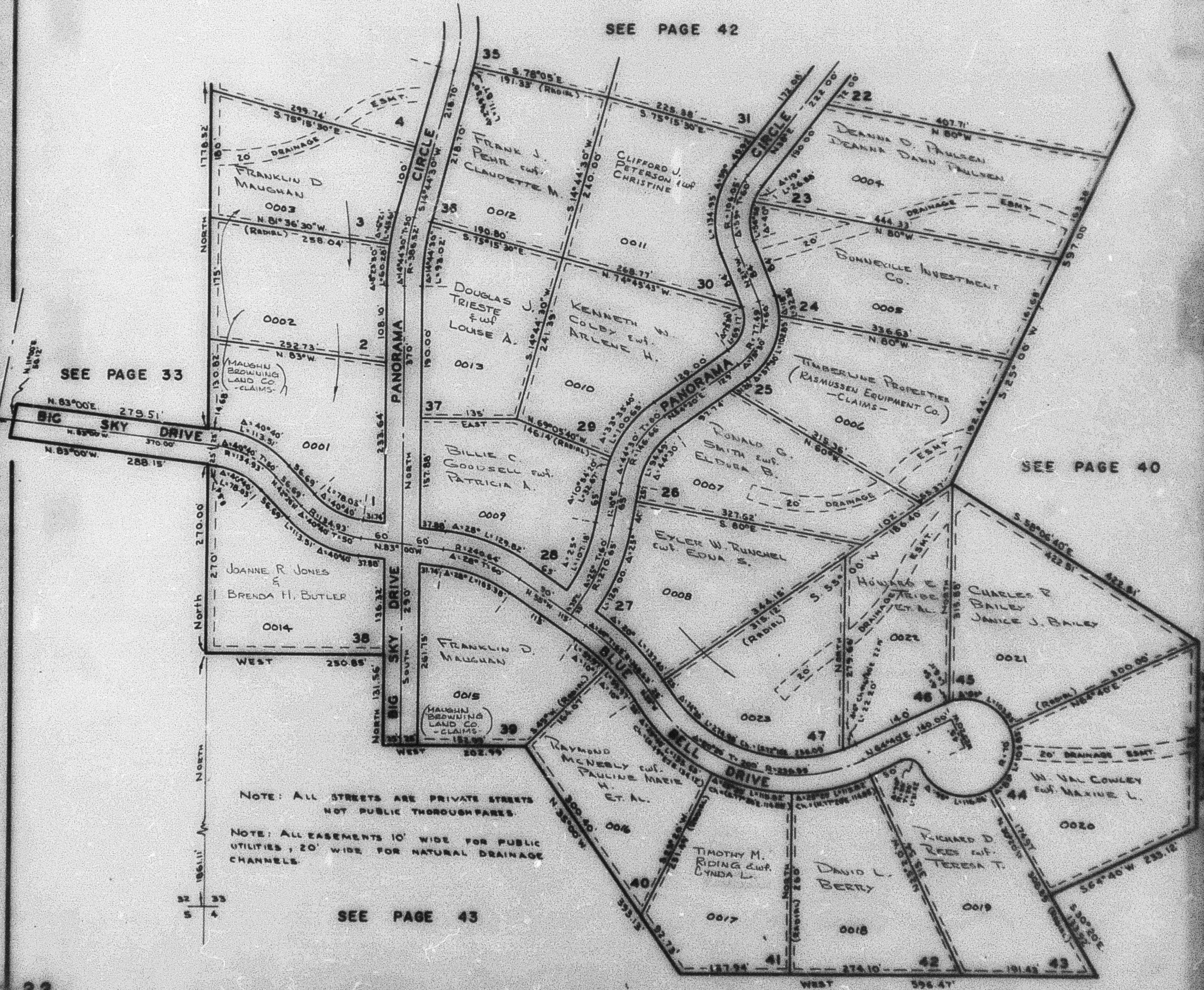
TAXING UNIT 28

WEBER COUNTY

PREFIX 22-041

SCALE 1" = 100'

SEE PAGE 42



SEE PAGE 33

SEE PAGE 40

NOTE: ALL STREETS ARE PRIVATE STREETS NOT PUBLIC THOROUGHFARES.

NOTE: ALL EASEMENTS 10' WIDE FOR PUBLIC UTILITIES, 20' WIDE FOR NATURAL DRAINAGE CHANNELS.

SEE PAGE 43